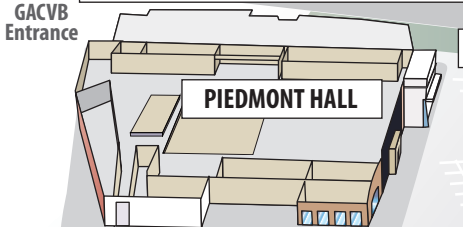


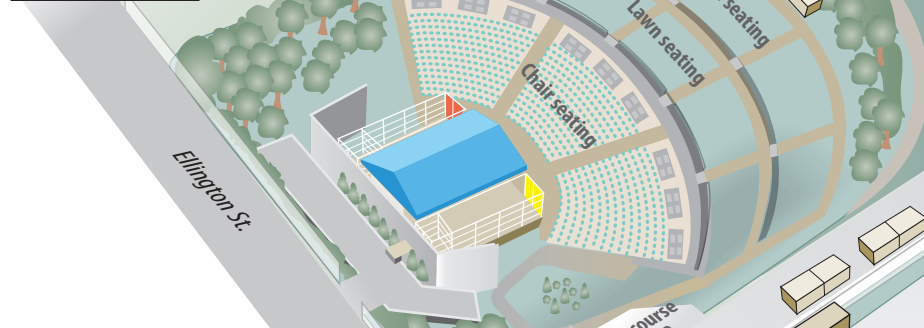


**Greensboro Coliseum Complex**

**GREENSBORO AREA CONVENTION AND VISITORS BUREAU/ SWARM OFFICES**



**AMPHITHEATRE - BACK OF HOUSE**  
**VIP**  
**GREEN ROOM**  
**PRODUCTION / DRESSING ROOMS**



**WHITE OAK AMPHITHEATRE**  
 Capacity: 6,061  
 Reserved: 2,061  
 Lawn: 4,000

**SWARM ENTRANCE**

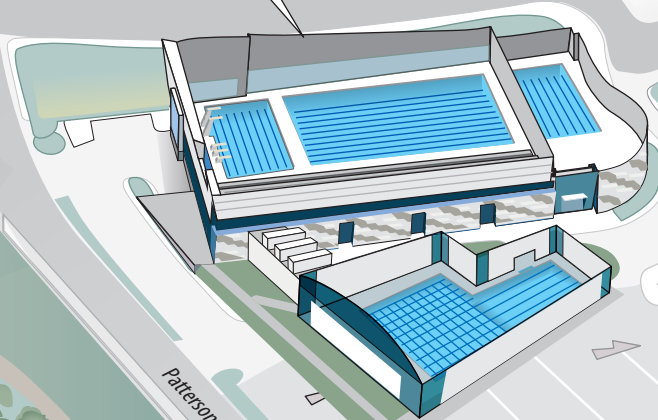
**BOX OFFICE**

**BOX OFFICE**

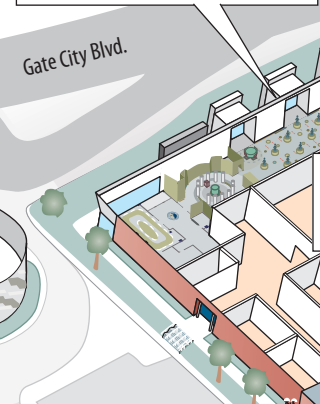
**ENTRY GATE**

**REST ROOMS**

**GREENSBORO AQUATIC CENTER**  
 Capacity: 2,500



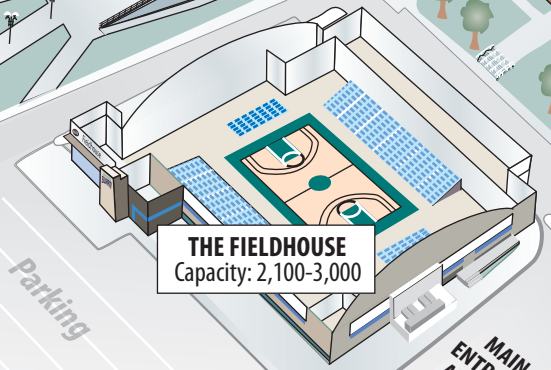
**ACC HALL OF CHAMPIONS**



**SPECIAL EVENTS CENTER HALL A**  
 40,000 square feet

**SPECIAL EVENTS CENTER HALL B**  
 20,000 square feet

**SPECIAL EVENTS CENTER HALL C**  
 60,000 square feet  
 Capacity: 5,000



**THE FIELDHOUSE**  
 Capacity: 2,100-3,000

**MAIN ENTRANCE AND EXIT**

**Entrance to lower level of coliseum**

**Upper level main entrance**

**Meeting rooms 7 & 8**

**Kitchen**

**COLISEUM ARENA**  
 Capacity: 22,000

**Coliseum entrance**

**Plaza**

**Coliseum administrative office**

**Suite parking**

**TFA Club**

**Ovations Lounge Entrance**

**THE TERRACE**

**Odeon Theatre**  
 Capacity: 302

**Atrium**

**Storage bldg.**

**Pedestrian ramp**

**North Parking entrance**

**Club parking**

**Premium parking**

**Staff parking**

**UNCG PARK 'N RIDE LOT**

**Private**

**Staff parking**

**Holbrook Street**

**Midway Street**

**Coliseum Boulevard**

**Service Drive**

**Bus parking**

**General parking**

**Bus parking**

**Premium parking entrance/exit only**

**Gate City Blvd.**

**Patterson St.**

**Ellington St.**